



PEP BAND AUDITIONS

2023-2024

SCHOOL YEAR

INFORMATION REGARDING AUDITIONS

Pep Band is an extra-curricular activity that takes place primarily in the Fall as well as in a portion of the Spring Semester. To participate in the ensemble, one must audition and be accepted by the director. Students auditioning will be scored on how well they performed on both the prepared and sight-reading categories of the audition. Their scores will determine their eligibility for the group as well as their chair placement in the ensemble. These auditions will be held afterschool during the second week of classes. A sign-up sheet will be available on the Band Room door.

Audition Requirements:

All Brass, Woodwind, and Bass Guitar must prepare:

- Bb Major Scale- Student may be asked to tongue up/slur down.
- FCA Fight Song- Pay attention to accents and dynamics.

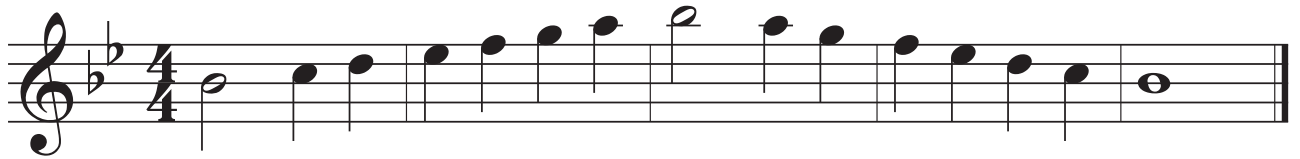
Percussionists must prepare:

- Bb Major Scale (on Xylophone- Perform notated rolls; only one octave is needed)
- Paradiddles (on Snare Drum)
- FCA Fight Song (on Snare Drum or Xylophone)
- Recommended- Proficiency on several percussion instruments including drum set.

As well, each student will be required to sight-read one piece of music that is 16-32 measures in length (Percussionists will sight read on Snare Drum). Prepared scales and music are provided in document below. Please print and bring to audition.

Flute

Bb Major Scale/Paradiddles



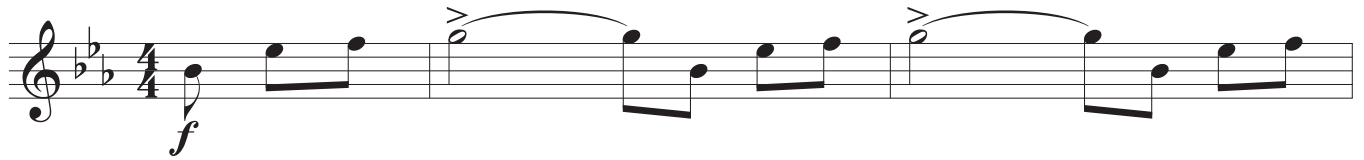
Flute

FCA Fight Song

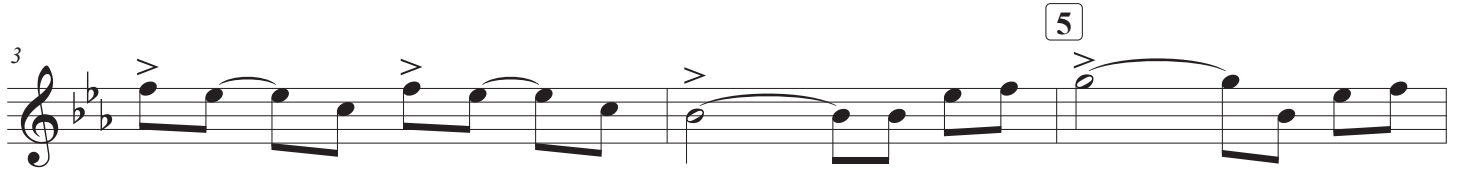
FCA Pep Band

Words and Music by
MATTHEW WOOLSEY
Arr. Matthew Woolsey

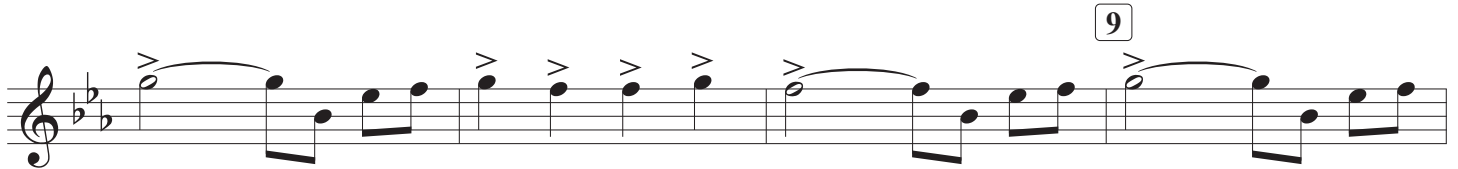
Exuberant; March Style ♩ = 135



We are the Flames, _____ We are the Flames, _____ we're ev - er



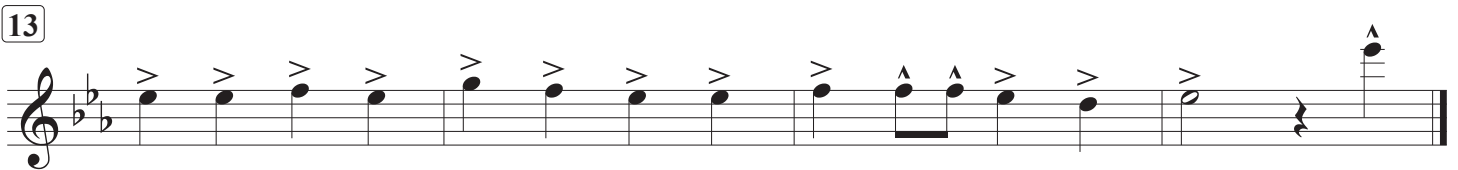
figh - ting _____ the dark - ness _____ with light! _____ We are the Flames, _____ We are the



Flames, _____ with Je - sus Christ we shine so bright! _____ We are the Flames, _____ We are the



Flames, Yes _____ we are! Our fi - re _____ will not grow dim! _____ And F - C -



A will walk in light and grace for we are vic - tor - i - ous! Hey!



1st B \flat Clarinet

B \flat Major Scale/Paradiddles



Clarinet in B \flat

FCA Fight Song

FCA Pep Band

Words and Music by
MATTHEW WOOLSEY
Arr. Matthew Woolsey

Exuberant; March Style $\text{♩} = 135$



f
We are the Flames, _____ We are the Flames, _____ we're ev - er

5



figh - ting _____ the dark - ness _____ with light! _____ We are the Flames, _____ We are the

9



Flames, _____ with Je - sus Christ we shine so bright! _____ We are the Flames, _____ We are the



Flames, Yes _____ we are! Our fi - re _____ will not grow dim! _____ And F - C -

13



A will walk in light and grace for we are vic - tor - i - ous! Hey!



B♭ Bass
Clarinet

B♭ Major Scale/Paradiddles



Bass Clarinet

FCA Fight Song

FCA Pep Band

Words and Music by
MATTHEW WOOLSEY
Arr. Matthew Woolsey

Exuberant; March Style ♩ = 135

4

5

7

9

10

13



E♭ Alto
Saxophone

B♭ Major Scale/Paradiddles



Alto Sax

FCA Fight Song

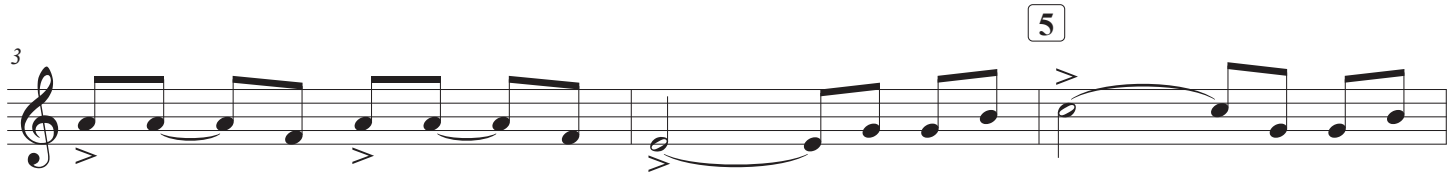
FCA Pep Band

Words and Music by
MATTHEW WOOLSEY
Arr. Matthew Woolsey

Exuberant; March Style ♩ = 135



We are the Flames, _____ We are the Flames, _____ we're ev - er



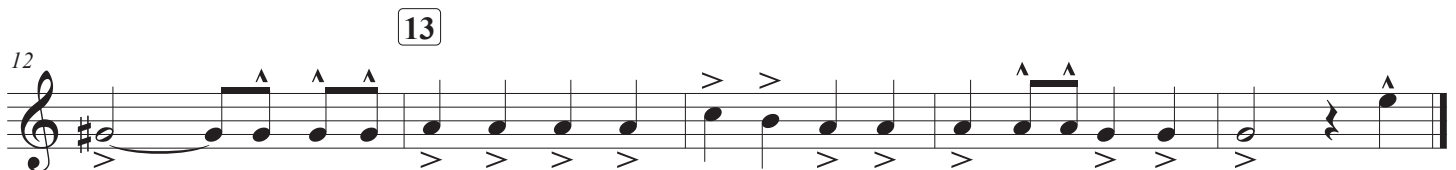
figh - ting _____ the dark - ness _____ with light! _____ We are the Flames, _____ We are the



Flames, _____ with Je - sus Christ we shine so bright! _____ We are the



Flames, _____ We are the Flames, Yes _____ we are! Our fi - re _____ will not grow



dim! _____ And F - C - A will walk in light and grace for we are vic - tor - i - ous! Hey!



1st B \flat Trumpet

B \flat Major Scale/Paradiddles



Trumpet in B \flat 1

FCA Fight Song

FCA Pep Band

Words and Music by
MATTHEW WOOLSEY
Arr. Matthew Woolsey

Exuberant; March Style $\text{♩} = 135$

1 2

f
We are the Flames, _____ We are the Flames, _____ we're ev - er

3 4

5

fig - ting _____ the dark - ness _____ with light! _____ We are the Flames, _____ We are the

6 7 8

9

Flames, _____ with Je - sus Christ we shine so bright! _____ We are the Flames, _____ We are the

10 11 12

Flames, Yes _____ we are! Our fi - re _____ will not grow dim! _____ And F - C -

13 14 15 16

13

A will walk in light and grace for we are vic - tor - i - ous! Hey!



Trumpet in B \flat 2

FCA Fight Song

FCA Pep Band

Words and Music by
MATTHEW WOOLSEY
Arr. Matthew Woolsey

Exuberant; March Style $\text{♩} = 135$

f
We are the Flames, _____ We are the Flames, _____ we're ev - er

5

3

figh - ting _____ the dark - ness _____ with light! _____ We are the Flames, _____ We are the

9

6

Flames, _____ with Je - sus Christ we shine so bright! _____ We are the Flames, _____ We are the

10

Flames, Yes _____ we are! Our fi - re _____ will not grow dim! _____ And F - C -

13

A will walk in light and grace for we are vic - tor - i - ous! Hey!



F Horn

Bb Major Scale/Paradiddles



Horn in F

FCA Fight Song

FCA Pep Band

Words and Music by
MATTHEW WOOLSEY
Arr. Matthew Woolsey

Exuberant; March Style ♩ = 135



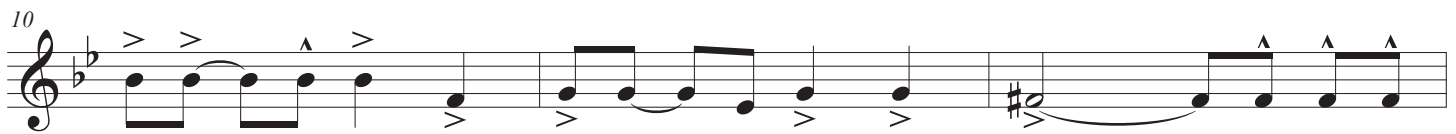
We are the Flames, _____ We are the Flames, _____ we're ev - er



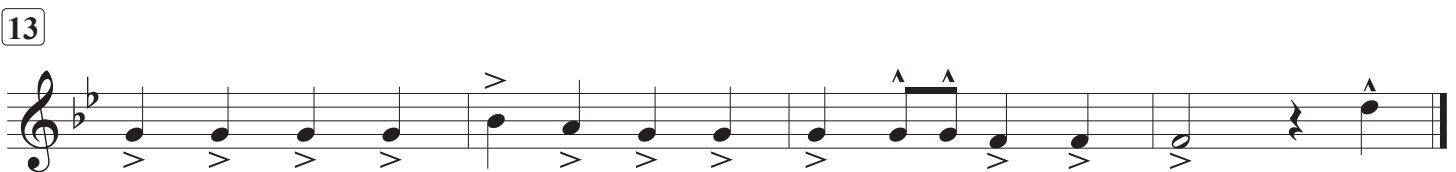
figh - ting _____ the dark - ness _____ with light! _____ We are the Flames, _____ We are the



Flames, _____ with Je - sus Christ we shine so bright! _____ We are the Flames, _____ We are the



Flames, Yes _____ we are! Our fi - re _____ will not grow dim! _____ And F - C -



A will walk in light and grace for we are vic - tor - i - ous! Hey!



Trombone/Euphonium/
Bass Guitar

Bb Major Scale/Paradiddles



Trombone

FCA Fight Song

FCA Pep Band

Words and Music by
MATTHEW WOOLSEY
Arr. Matthew Woolsey

Exuberant; March Style ♩ = 135



f

We are the Flames, _____ We are the Flames, _____ we're ev - er

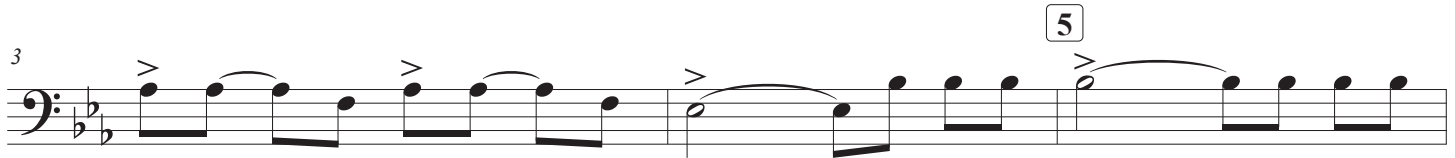


fig - ting _____ the dark - ness _____ with light! _____ We are the Flames, _____ We are the



Flames, _____ with Je - sus Christ we shine so bright! _____ We are the Flames, _____ We are the



Flames, Yes _____ we are! Our fi - re _____ will not grow dim! _____ And F - C -



A will walk in light and grace for we are vic - tor - i - ous! Hey!



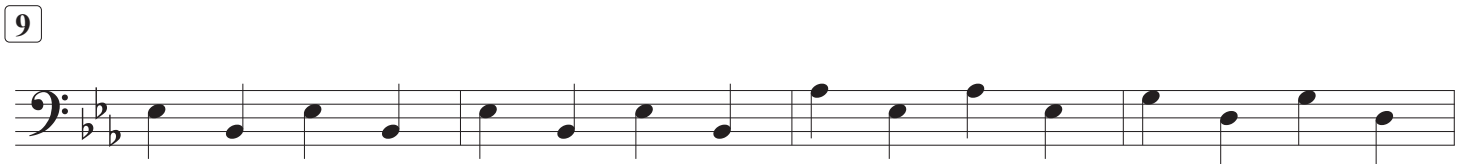
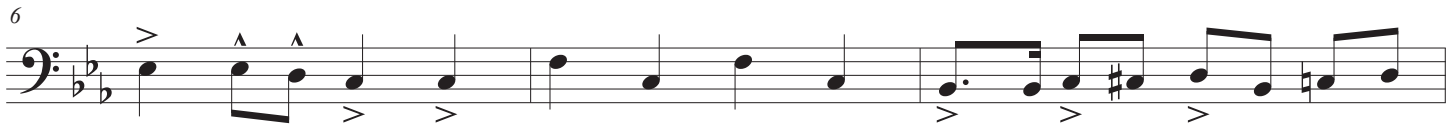
Euphonium

FCA Fight Song

FCA Pep Band

Words and Music by
MATTHEW WOOLSEY
Arr. Matthew Woolsey

Exuberant; March Style ♩ = 135

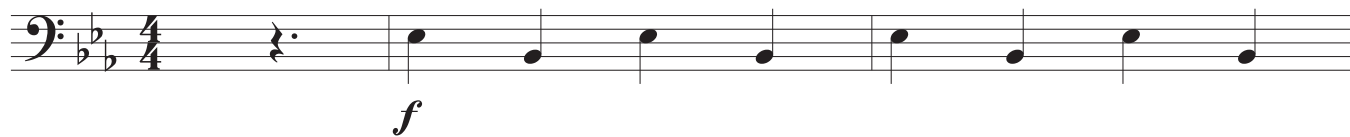


FCA Fight Song

FCA Pep Band

Words and Music by
MATTHEW WOOLSEY
Arr. Matthew Woolsey

Exuberant; March Style ♩ = 135



5



9



13



Tuba

Bb Major Scale/Paradiddles

The image shows a single staff of music in bass clef, 4/4 time, with a key signature of one flat (Bb). The scale is written as a sequence of notes: Bb, C, D, Eb, F, G, Ab, Bb. The notes are grouped into four measures: the first measure contains Bb and C; the second contains D, Eb, and F; the third contains G, Ab, and Bb; and the fourth contains a whole note Bb. The notes are marked with stems pointing downwards, indicating they are played on the lower side of the tuba.

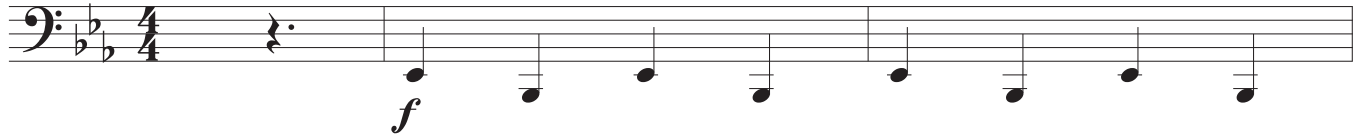
Tuba

FCA Fight Song

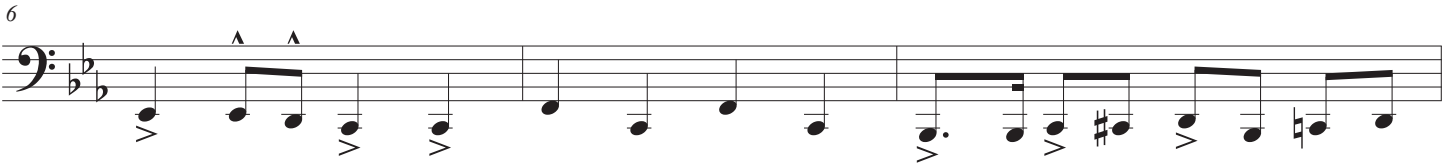
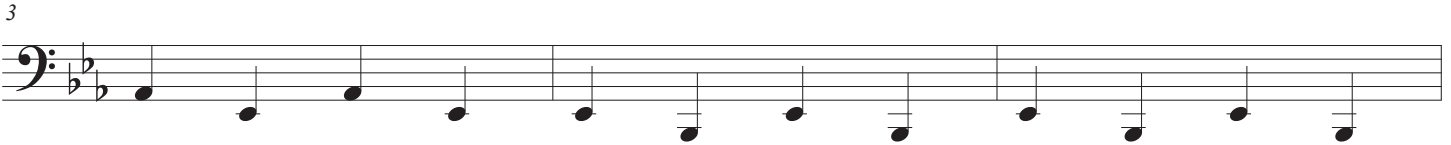
FCA Pep Band

Words and Music by
MATTHEW WOOLSEY
Arr. Matthew Woolsey

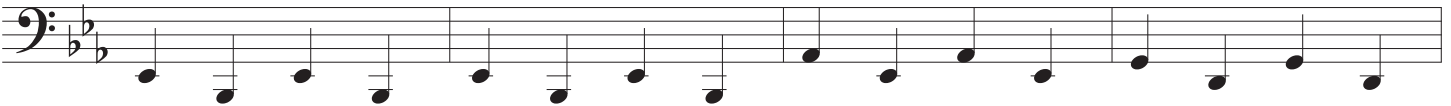
Exuberant; March Style ♩ = 135



5



9



13



Bb Major Scale/Paradiddles

Musical notation for the first system of the Bb Major Scale/Paradiddles exercise. The top staff is a treble clef with a key signature of two flats and a 4/4 time signature. The melody is written as quarter notes across two measures. The bottom staff is a bass clef with a 4/4 time signature, showing a paradiddle pattern of eighth notes. Above the bass staff, the rhythmic notation is: >RLRR LRL LRL RLRL LRL LRL RLRL LRL LRL.

Musical notation for the second system of the Bb Major Scale/Paradiddles exercise. The top staff is a treble clef with a key signature of two flats and a 4/4 time signature. The melody is written as quarter notes across three measures, ending with a double bar line. The bottom staff is a bass clef with a 4/4 time signature, showing a paradiddle pattern of eighth notes. Above the bass staff, the rhythmic notation is: >RLRR LRL LRL RLRL LRL LRL RLRL LRL LRL RLRL LRL LRL.

Bells/Xylophone

FCA Fight Song

FCA Pep Band

Words and Music by
MATTHEW WOOLSEY
Arr. Matthew Woolsey

Exuberant; March Style ♩ = 135

Only Xyl. Rolls

f

We are the Flames, _____ We are the Flames, _____ we're ev - er

3 4 5

figh - ting _____ the dark - ness _____ with light! _____ We are the Flames, _____ We are the

6 7 8 9

Flames, _____ with Je - sus Christ we shine so bright! _____ We are the Flames, _____ We are the

10 11 12

Flames, Yes _____ we are! Our fi - re _____ will not grow dim! _____ And F - C -

13 14 15 16

A will walk in light and grace for we are vic - tor - i - ous! Hey!



Snare Drum

FCA Fight Song

FCA Pep Band

Words and Music by
MATTHEW WOOLSEY
Arr. Matthew Woolsey

Exuberant; March Style ♩ = 135

The image displays the snare drum part for the FCA Fight Song. It consists of five staves of music in 4/4 time, with a tempo of 135 beats per minute. The notation is written on a single-line staff with a treble clef and a key signature of one flat. The music begins with a quarter rest followed by a series of eighth notes, each with an accent (>). The first staff is marked with a forte (*f*) dynamic. The second staff contains a measure number '5' in a box. The third staff contains a measure number '9' in a box. The fourth staff contains a measure number '13' in a box. The music concludes with a final note marked with an accent (>) and a fermata.



The first part of the document discusses the importance of maintaining accurate records of all transactions. It emphasizes that every receipt, invoice, and bill should be properly filed and indexed for easy retrieval. This not only helps in tracking expenses but also provides a clear audit trail for tax purposes. The second part of the document outlines the various methods used to collect and analyze data. It includes a detailed description of the survey process, from the design of the questionnaire to the distribution and collection of responses. The analysis section describes how the data was processed and the statistical methods used to interpret the results. The final part of the document presents the findings of the study, highlighting the key trends and insights that emerged from the data. It also discusses the implications of these findings for future research and practical applications in the field.